



DowntownNews

VOLUME 17 ISSUE 1 | FEBRUARY 2013

HIGHLIGHTS INSIDE THIS ISSUE

Christmas Window Contest

Downtown BIA Members
Unresponsive to Casino Question

95 King Street East

A New Collaboration in
Downtown Hamilton

Welcome Krista Wetmore!

Around Town

Welcome Kerry Jarvi!

Great Year for Growth in
Downtown Hamilton!

Gore Master Plan and
Pedestrian Pilot Update

Special Events

The Residences of Royal Connaught

Was it the site of your workplaces lavish holiday parties? Was it the place to go to ring in the New Year? Was it the after work meeting spot for a casual lounge show? I am sure most Hamiltonians have many memories of the Royal Connaught Hotel. When given the opportunity to discuss "The Residences of Royal Connaught" with one of the two developers and the interior designer you cannot help but talk about the history of the iconic Royal Connaught.

Valery Homes and Spallacci Group are pleased to announce "The Residences of Royal Connaught", a reincarnation of this iconic address into a condominium development with boutique retail, restaurants and cafes. Phase 1 including 135 of the 700 new residential units are expected to be completed in 2015 with the first phase of retail approximately a year later.

This reincarnation is going full steam ahead after a few challenges by previous owners and a few false starts. The presentation centre will open in the summer of 2013. Located in the hotel's indelible three-storey art deco lobby, the centre will feature the signature glass staircase and mezzanine, a grand piano, coffee bar and sleek art deco contemporary furniture. Original columns will be illuminated to highlight the dramatic 23 feet ceiling and architectural features. This will transition into the main lobby and reception area of the residence.

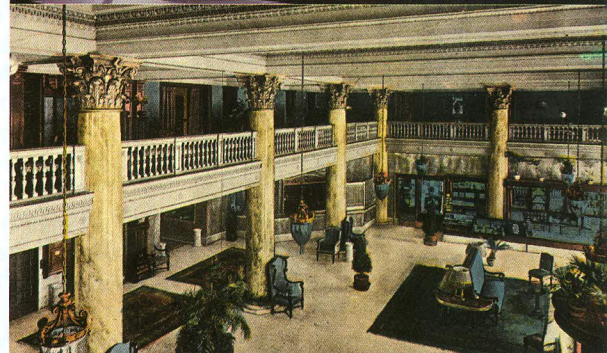
Rudi Spallacci, President of Spallacci Group, is a life time Hamiltonian. His interest in the Royal Connaught is emotional. He has memories of a vibrant downtown, filled with people and activity. He is interested in building on existing development downtown with "The Residences of Royal Connaught". "Cities need a strong core and Hamilton has all the characteristics to be a success. We need to bring life back," says Spallacci. He is encouraged that bringing more opportunities for people to live downtown will be part of the return of a vibrant downtown Hamilton.

Lisa Boyer of LB Designs is excited to be part of this unique condominium project that has the opportunity to combine the history of the property with fresh new elements. In the presentation centre, many existing features will be repaired and some will be repurposed. When deciding to take on the project, Ms. Boyer discussed her family's connection with the property. Her father worked down the street from the Royal Connaught and painted a mental picture to her of the grand hotel and ball rooms. Her designs will bring back that glamour, embracing the existing art deco design with contemporary touches for a chic look.

One bedroom condominiums ranging in size 530 sq. ft. to 1,190 sq. ft. will start in the high \$100,000's. Unique to this price point, all suites will be custom designed by Ms. Boyer. Owners can choose from three fully designed themes that are created to work with the flow of the property.

Mr. Spallacci is encouraged that others share in the enthusiasm of "The Residences of Royal Connaught". After releasing the plans on January 22nd the response has been phenomenal. Interested parties have been registering on their site from all over the GTA and beyond.

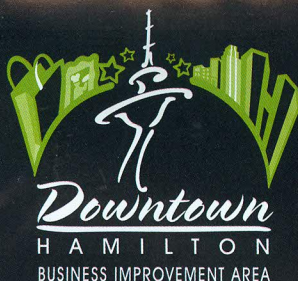
For more information on the property, please visit www.royalconnaught.com.



Vintage Postcards of Royal Connaught courtesy of www.hamiltonpostcards.com



Royal Connaught Lobby in the early forties
Courtesy Special Collections, Hamilton Public Library



DOWNTOWN NEWS IS A
PUBLICATION OF THE
DOWNTOWN HAMILTON BIA

20 Hughson St. S.
Suite 807
Hamilton, Ontario,
Canada L8N 2A1
Tel. 905-523-1646
Fax. 905-523-5433



Downtownhamilton BIA
DwntwnHamBIA

info@downtownhamilton.org
www.downtownhamilton.org

