

newcondos

From
hotel
to hot
spot

Hamilton's
Royal Connaught
in the thick of it

LISA VAN DE VEN
Steps Away

When you take an historic hotel, built in 1916, refurbish and add to the design for a landmark condominium project, chances are the new iteration is going to be a drawing point. "There are a lot of people anticipating the [Residences of] Royal Connaught," says Rodi Spallacci. "The architecture of the building is hard to replicate in this day and age." The Hamilton hotel's history, too — once a destination for royalty and Hollywood celebrities — helps set it apart. But those aren't the only things Royal Connaught has going for it, adds Mr. Spallacci, president of Spallacci Group, partner on the project with Valery Homes. The downtown location — taking up an entire block, between King, Main, John and Catharine streets — is just as much a feature. "When you're in the core, everything's within walking distance," says the developer. There's plenty there for residents to do.

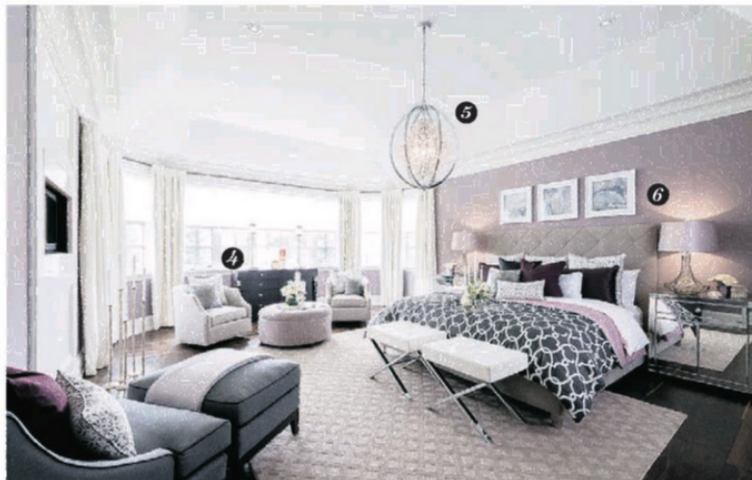
50 Steps While there will be retail on the ground level, the details are still to be determined. The site is close to Gore Park, the city's popular downtown green space, across the street from the site. "That's going through an extensive revitalization — it's going to introduce a pedestrian promenade with public art and benches," Mr. Spallacci adds. The park extends two city blocks — perfect for an evening walk.

250 Steps There are some boutiques and restaurants along the side streets," Mr. Spallacci says, and those are just a little farther on from Gore Park. Grab a drink with friends at Two Black Sheep or Radius. Or make it a day: FirstOntario Centre (formerly Copps Coliseum), the Art Gallery of Hamilton, the Hamilton Public Library and Nations Fresh Foods are along the same block, offering plenty to do, all of it just a few minutes from the project.

400 Steps Just five minutes from Royal Connaught, on King Street East, is the shopping and dining of Hamilton's International Village business area. There, get your morning coffee fix at Café Oranje, a "gourmet coffee spot that's frequented quite a bit. It's got Dutch baked goods," Mr. Spallacci says. Meanwhile, the Hamilton GO Centre, at James and Hunter streets, is just an eight-minute walk away from the project, or stroll in the other direction instead, to the trendy James Street North art and design district.

Units at The Residences of Royal Connaught range from 555 to 850 square feet, from the mid-\$200,000s to the mid-\$400,000s. The sales office is at 112 King St. E., Hamilton, open Monday to Thursday from noon to 6 p.m., Friday by appointment and weekends from noon to 5 p.m. Call 905-645-0450 or visit royalconnaught.com.

National Post



Casual glamour

Jane Lockhart helps Angus Glen's Peyton model quietly show off its luxury appointments *By Lisa Van de Ven*

What did Jane Lockhart hope to achieve in the Peyton model home at Angus Glen in Markham? Simply, she wanted to make a beautiful home even more beautiful. "I wanted to make the design and decor very elegant," says the designer, of Jane Lockhart Interior Design. As she didn't want that design to compete with the architectural features showcased throughout the house — from a waffle ceiling in the kitchen to a two-storey great room with a Juliet balcony — she opted for a "quiet" look, with light grey-beige walls and dark hand-scraped hardwood flooring. Pops of colour come out in the furniture. "We've just enhanced the gracefulness of the design," Ms. Lockhart says. Available homes at the Kylesmore Communities site range from 3,100 to 4,340 square feet and are priced from \$2,549,990. The sales office is at 285 Angus Glen Blvd. and open Monday to Thursday from 1 to 7 p.m., Friday by appointment, and weekends and holidays from 11 a.m. to 6 p.m. Call 905-887-9950 or visit kylesmorecommunities.com.

1 This dark console in the great room helps "show off the lighter elements, like the ceiling and trim," says Ms. Lockhart. It also picks up the colour of the hardwood floors, themselves contrasted with a light grey area rug, custom sized to anchor the seating space.

4 "This room is really its own suite," Ms. Lockhart says of the master bedroom, where she featured this dark grey chair and ottoman from her own furniture collection, Jane by Jane Lockhart. Another seating area features two swivel chairs. The room gives parents their

2 Ms. Lockhart needed a light fixture that fit the scale of the two-storey great room, but didn't mess with the views. This champagne-colored metal fixture from Union Lighting was the perfect match: large but "airy and elegant" at the same time. "It's industrial glamour," the designer adds.

5 "It feels like a piece of jewelry, like a beautiful stunning necklace," Ms. Lockhart says of the bedroom's light fixture, which features a chrome frame surrounding a crystal centre. "In the master bedroom, we wanted beautiful elements that were just little bit

3 "You can have a traditional structure but still have more casual furniture," Ms. Lockhart says, and she wanted to show as much with this charcoal-toned sectional sofa. It shows off the scale of the space, while an oversized teal ottoman adds a pop of colour.

6 Feminine accents are used throughout the bedroom. The graphic bedspread is lined with dusty rose, while the walls are painted grey with undertones of purple — a trend the designer is starting to see a lot of. "People still want neutral, but they don't want the same

FOR SALE



Price range: \$199,990 to the mid \$400,000s
Location: Yonge Street and Eglinton Avenue, Toronto

BROADWAY BOUND

Designed by Wallman Architects with interiors by Cecconi Simone, CityLights on Broadway is a new two-tower project near Yonge and Eglinton. It's near shopping, cinemas, schools and restaurants; it will have more than 28,000 sq. ft. of amenities. In pre-registration. **Builder/developer** Pemberton Building **Two** 34-storey buildings linked by a podium **Suites** Studio, one-bedroom, one-bedroom-plus-den and two-bedroom layouts **Size** 405 to 860 square feet **Occupancy** November 2018 **Features** Floor-to-ceiling windows, wide-plank laminate flooring, smooth ceilings, quartz kitchen and ensuite countertops, back-painted glass tile backsplashes. **Amenities** A half-court for basketball and other sports, a fitness centre, a rooftop terrace with hammocks, two pools, fire pits and barbecue areas. **Standouts** Close to Eglinton subway station. **Sales office** Call 416-546-6355 or visit citylightscondos.ca. *L.V., National Post*



Price range: Starting from \$219,990
Location: Kerr Street and Speers Road, Oakville

NEAR KERR VILLAGE

The second of two buildings at Rain Condominiums, Senses Condos is near Oakville's downtown, with easy access to the waterfront, parks, golfing, GO and the QEW. Designed by Graziani + Corazza Architects. **Builder/developer** Empire Communities **Building** 19 storeys **Suites** Studio, one-bedroom, one-bedroom-plus-den, two-bedroom and two-bedroom-plus-den layouts **Size** 346 to 1,250 square feet **Occupancy** October 2016 **Features** Nine-foot ceilings (10 feet in penthouses), laminate flooring in principal rooms, granite kitchen countertops and glass tile backsplashes. **Amenities** A guest suite, an indoor pool, a whirlpool, an exercise room, a barbecue terrace, pet wash and carwash areas. **Standouts** Close to Kerr Village, the Oakville Centre for the Performing Arts, Oakville Trafalgar Memorial Hospital. **Sales office** At 521 Kerr St., Oakville. Visit empirebusiness.com. *L.V., National Post*